



BRACKETS MOUNTS & HARDWARE

PRODUCTS | 001 | 002 | 003 | 004 | 005 | 006 | 007 | 008 | 009 | 010 | 011 | 012 | 013 | 014 | 015 | 016 | 017 | 018 | 019 | 020 | 021 | 022 | 023 | 024 | 025 | 026 | 027 | 028 | 029 | 030 | 031 | 032 | 033 | 034 | 035 | 036 | 037 | 038 | 039 | 040 | 041 | 042 | 043 | 044 | 045 | 046 | 047 | 048 | 049 | 050 | 051 | 052 | 053 | 054 | 055 | 056 | 057 | 058 | 059 | 060 | 061 | 062 | 063 | 064 | 065 | 066 | 067 | 068 | 069 | 070 | 071 | 072 | 073 | 074 | 075 | 076 | 077 | 078 | 079 | 080 | 081 | 082 | 083 | 084 | 085 | 086 | 087 | 088 | 089 | 090 | 091 | 092 | 093 | 094 | 095 | 096 | 097 | 098 | 099 | 100

Section 6 - BRACKETS, MOUNTS & HARDWARE

- **BRACKETS, MOUNTS & HARDWARE6.0**
 - Brackets, Mounts & Hardware Additional Products
and Accessories 6.10
 - Insulator Brackets for Overhead Lines 6.20
 - Vault Brackets and Junction Cabinets 6.30
 - Substation Flexible Jumpers 6.40
 - Miscellaneous Hardware. 6.50
 - Self-Design Worksheet 6.60



Brackets, Mounts & Hardware

ADDITIONAL PRODUCTS AND ACCESSORIES

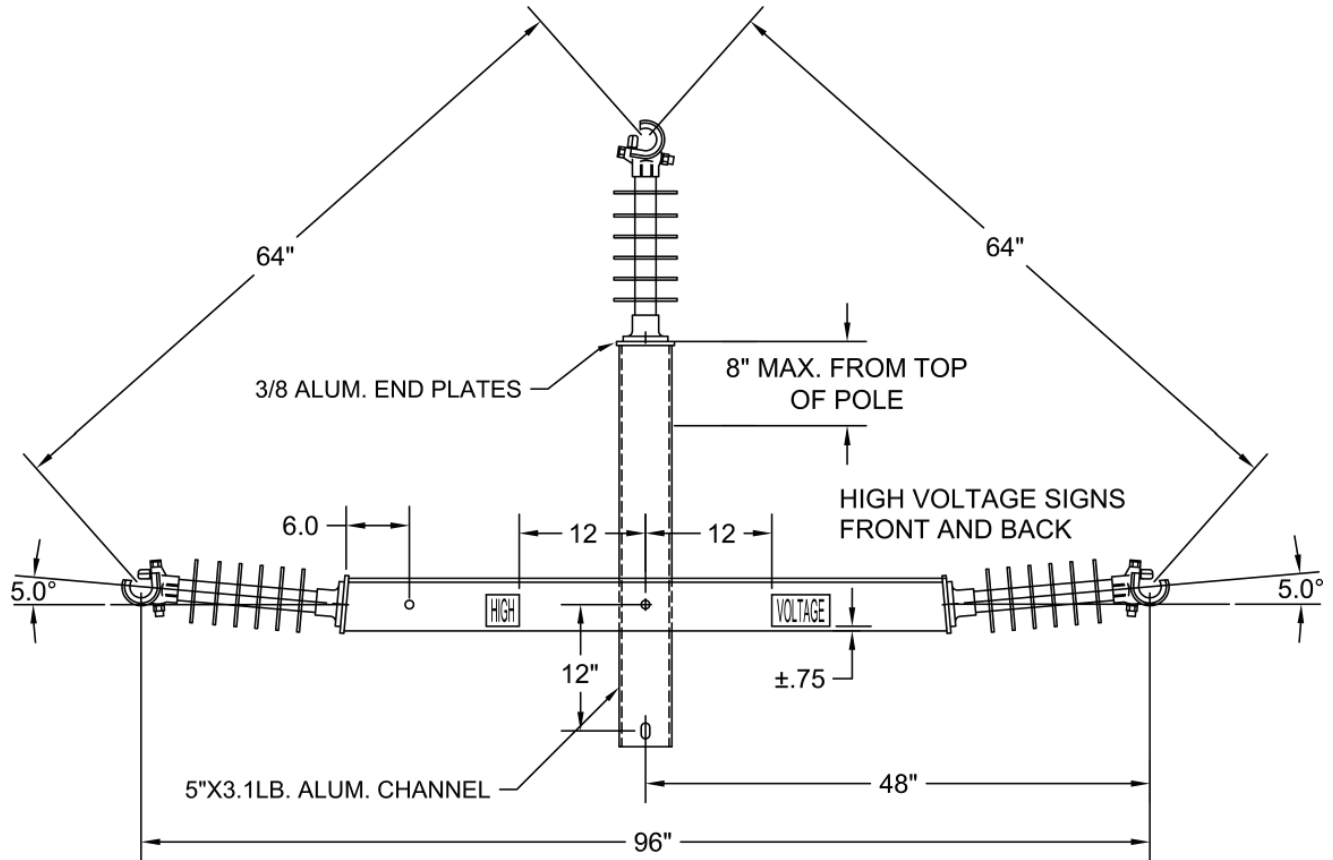
INERTIA offers a series of supporting components and accessories to aid in the switchgear construction process including brackets, mounts, hardware, jumpers, as well as other. Please see the items listed below:

- Bracket, Mounts & Hardware Additional Production and Accessories
 - 15 kV - 69 kV Triangular Standard or Raptor Clearance (*with or without Insulators*)
 - 15 kV - 69 kV Twin Circuit Pole Top Insulator Frame (*with or without Insulators*)
- Insulator Brackets for Overhead Lines
 - Special Application Pole or Tree Mounted Insulator Brackets (*with or without Insulators*)
 - Line Post Insulator Brackets
 - Single Phase or 3 Phase Termination Bracket
 - Custom Standoff Brackets
- Vault Rack/Junction Bar Assemblies
 - Vault Junction Bars
 - Elbow Parking Stands (*Standard or Wall Mounted*)
 - Temporary Vault Support Kits
- Substation Flex Jumpers:
 - 1 KA - 4 KA Super-flexible Busbar Jumpers
 - 800 A Flexible Tinned Copper Braid Jumpers
- Misc. Hardware:
 - Station Post Insulator Adapters
 - 5 kV - 25 kV Phase/Conductor Spacers
 - Fuse Holders, Pole Mounted
 - 1/2"-13 Torque-limiting Shear Nuts (303 Stainless Steel or Zinc, Die Cast)

In addition to the above listed products Inertia accepts customer requests for custom designed hardware and equipment. Please use the "Self-Design Worksheet" or submit any drawings or supporting documentation with your request for quote.

35 kV Triangular Framing Assembly

Tri-Frame brackets reduce installation time and crossarm replacement. They are available in 15 kV - 69 kV versions with either standard clearances or avian (Raptor) protection clearances. They are available with or without insulators.



- 3/4"X 1-3/4" GRADE 2 HEX BOLTS AND LOCK WASHERS SUPPLIED WITH 34.5 kV TINNED UNIVERSAL CLAMP TYPE SILICONE INSULATORS.
- TORQUE INSULATOR MOUNTING BOLTS TO 65-75 FT. LBS.

This drawing is for illustrative purposes only and therefore; may, or may not reflect the current revision of this drawing. Please request the current revision from the factory upon quote.



Materials:

Finish:

Scale: NTS

Drawn By: N/A

Date: N/A

Description:

35 kV Triangular Framing Assy. Extra Clearance

Drawing No.:

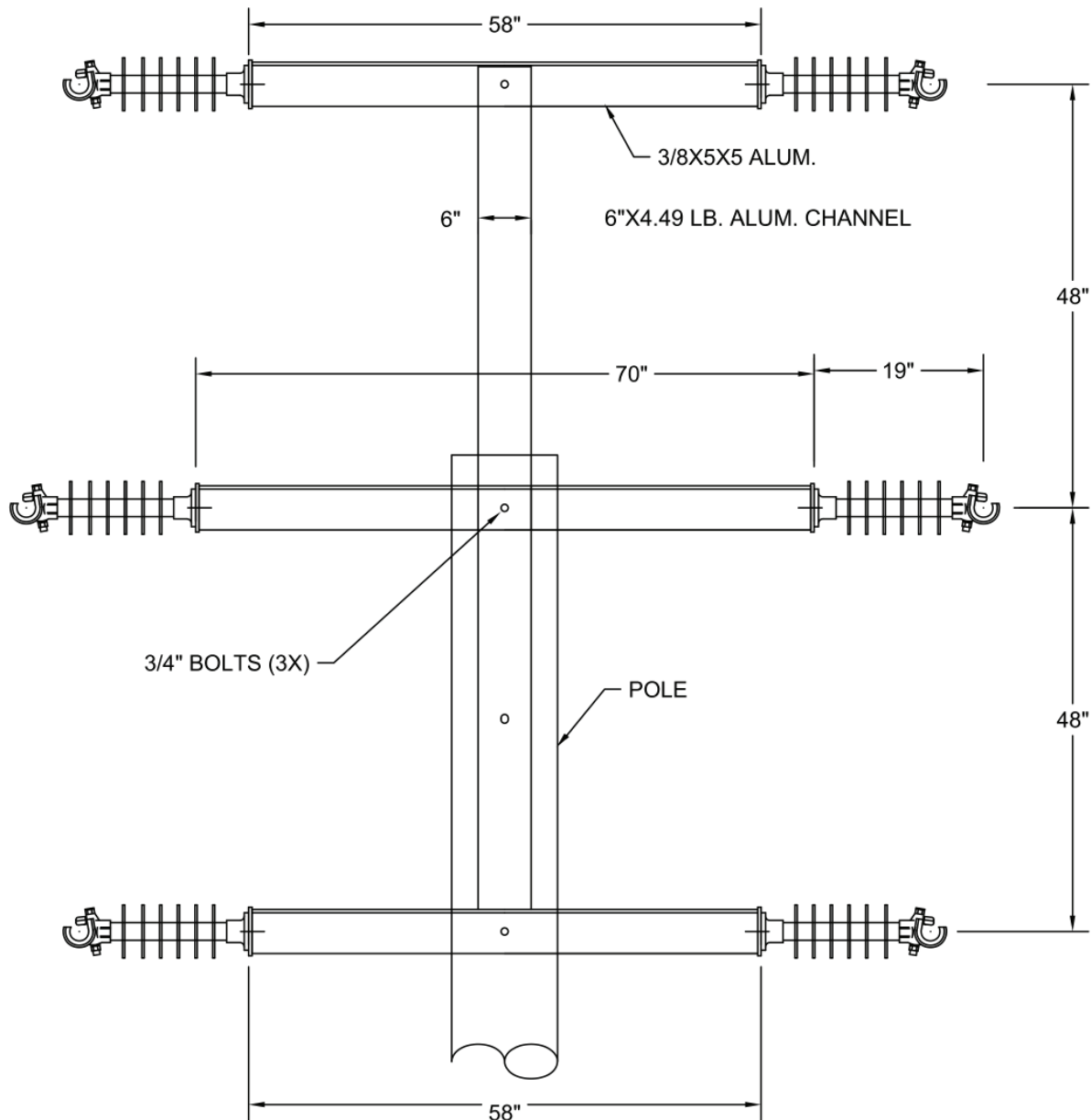
9-084A-EXM

Revision:

00

Twin Circuit, 34.5 kV Pole Top Insulator Frame

Twin circuit insulator brackets reduce installation time and crossarm replacement. They are available in 15 kV - 69 kV versions with either standard clearances or Avian (Raptor) protection clearances. They are available either with or without insulators.



6061-T6 Anodized Aluminum

Frame is supplied with or without insulators.

Insulator are bolted upright on the horizontal arms for shipping

This drawing is for illustrative purposes only and therefore; may, or may not reflect the current revision of this drawing. Please request the current revision from the factory upon quote.

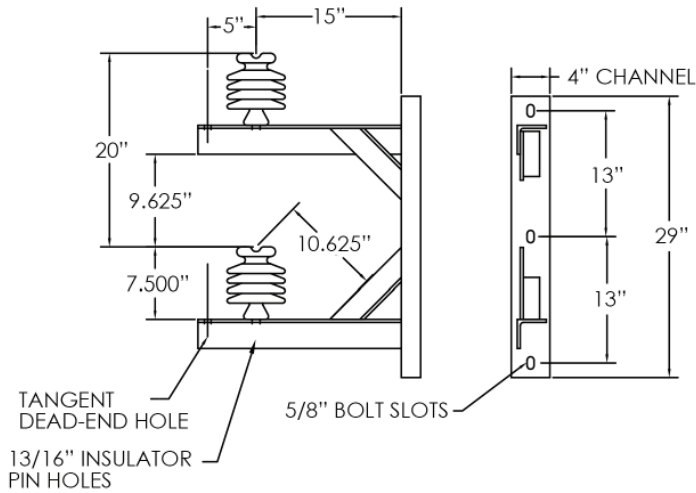


Materials:	
Finish:	
Scale:	NTS
Drawn By:	N/A
Date:	N/A

Description:	Twin Circuit, 34.5 kV Pole Top Insulator Frame	
Drawing No.:	9-394M	Revision: 00

Pole or Tree Mounted Insulator Brackets

Special application insulator mounting brackets. Lightweight durable; available with or without insulators.



TWO POLE INSULATOR RACK
9-359B

This drawing is for illustrative purposes only and therefore; may, or may not reflect the current revision of this drawing. Please request the current revision from the factory upon quote.



Materials:		Description:	
Finish:		Pole or Tree Mounted Insulator Brackets	
Scale:	NTS	Drawing No.:	9-359M
Drawn By:	N/A	Revision:	00
Date:	N/A		