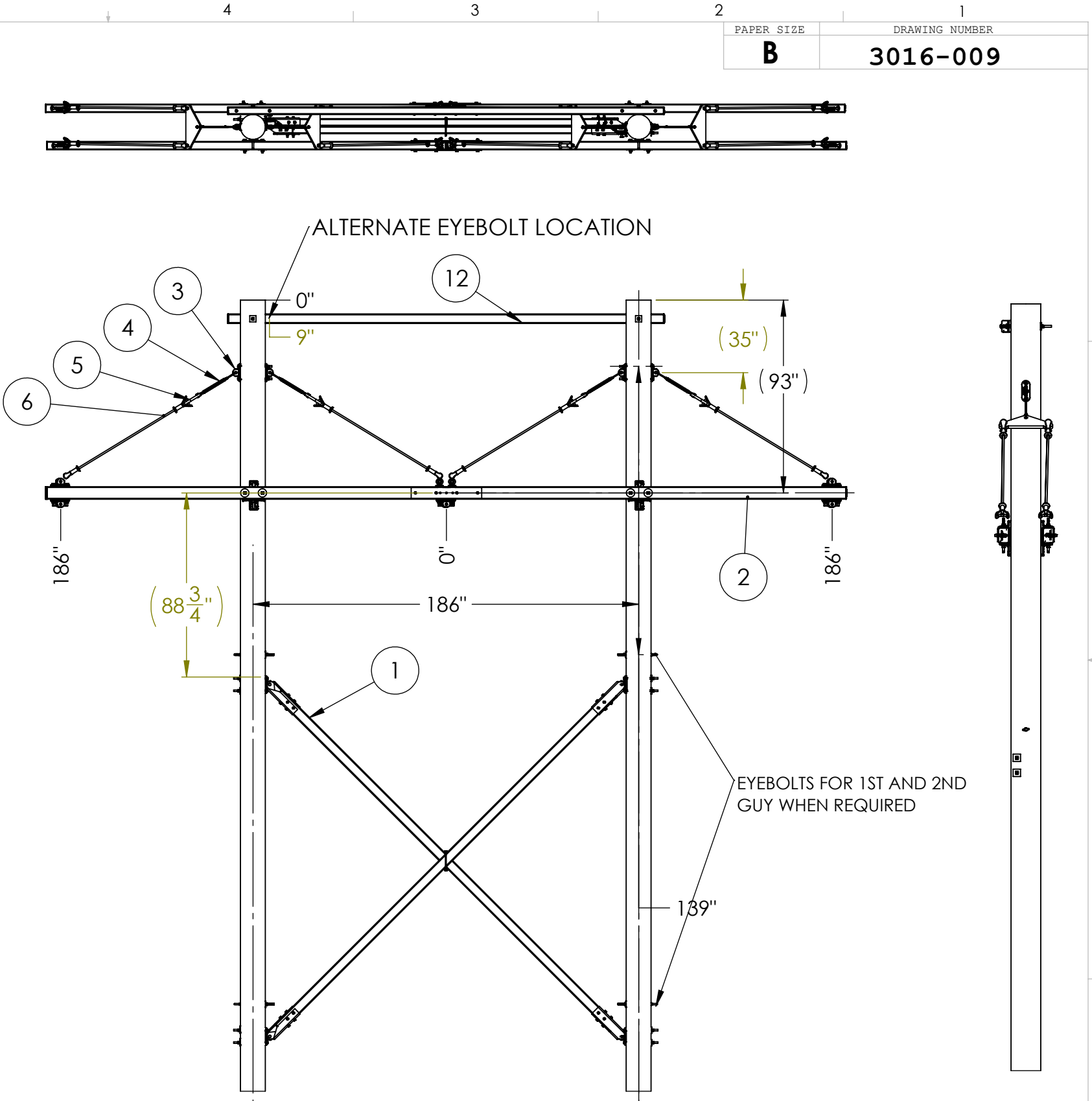



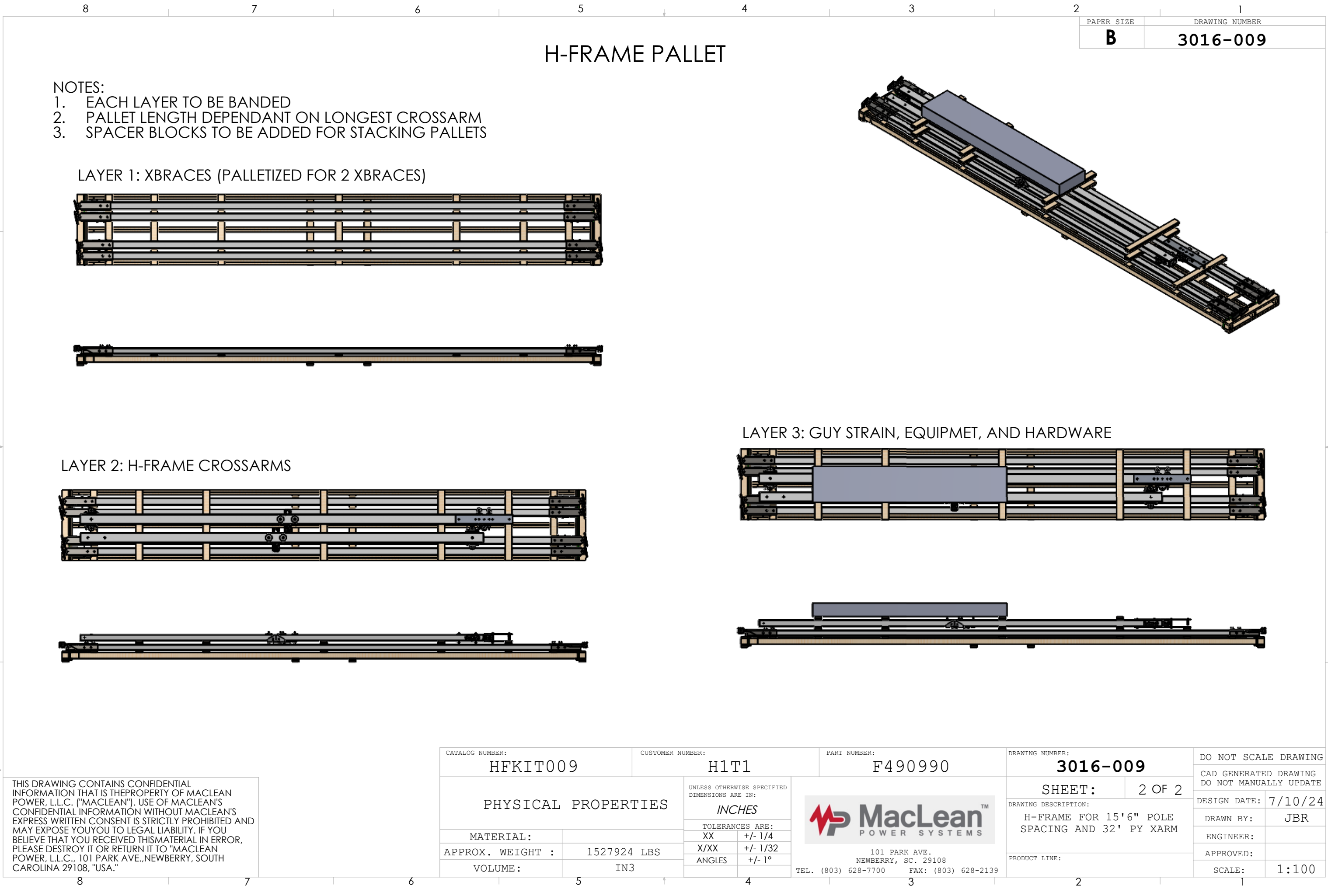
ITEM NO.	PART NUMBER	DESCRIPTION	QTY.
1	F490992	PW XBRACE FOR 15'6" POLE SPACING WITH HARDWARE	1
2	F490991	32' PY TANGENT CROSSARM, H- FRAME	2
3	F313220	DEAD END TEE, 60 KIPS	4
4	F316647	JAW-JAW TURNBUCKLE	4
5	F341237	YOKE PLATE	4
6	GYCC30-54N	54" YCLEVIS-CLEVIS GUYSTRAIN, ROTATED	8
7	J9536	SHOULDER EYE BOLT, 16 IN	4
8	F614478	3X3X0.25 CURVED WASHER	8
9	F614506	BOLT-MACHINE-3/4 X20	6
10	F614577	NUT-SQ-3/4 (P42223)	10
11	F614686	NUT-LOCK-3/4	10
12	F490993	17.5' PW H-FRAME BRACE	1
13	P72051	13/16" ID 4" ROUND WASHER, GALVANIZED	2

- NOTES
- 1. POLES NOT INCLUDED
  - 2. X BRACE DETAILS ON DWG 3017-006
  - 3. 32' PY TANGENT DETAIL ON DWG 3006-517
  - 4. 17.5 PW H-FRAME BRACE DRAWING: 3003-384



THIS DRAWING CONTAINS CONFIDENTIAL INFORMATION THAT IS THE PROPERTY OF MACLEAN POWER, L.L.C. ("MACLEAN"). USE OF MACLEAN'S CONFIDENTIAL INFORMATION WITHOUT MACLEAN'S EXPRESS WRITTEN CONSENT IS STRICTLY PROHIBITED AND MAY EXPOSE YOU TO LEGAL LIABILITY. IF YOU BELIEVE THAT YOU RECEIVED THIS MATERIAL IN ERROR, PLEASE DESTROY IT OR RETURN IT TO "MACLEAN POWER, L.L.C., 101 PARK AVE., NEWBERRY, SOUTH CAROLINA 29108, "USA."

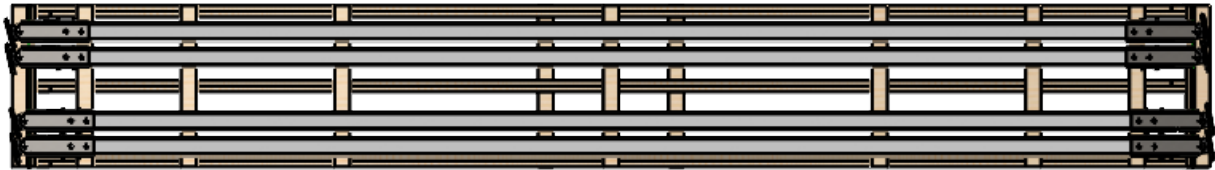
CATALOG NUMBER: HFKIT009		CUSTOMER NUMBER: H1T1/H1T3		PART NUMBER: F490990		DRAWING NUMBER: 3016-009		DO NOT SCALE DRAWING		
PHYSICAL PROPERTIES				UNLESS OTHERWISE SPECIFIED DIMENSIONS ARE IN:  INCHES		<div> 101 PARK AVE. NEWBERRY, SC. 29108 TEL. (803) 628-7700      FAX: (803) 628-2139</div>		CAD GENERATED DRAWING DO NOT MANUALLY UPDATE		
								DESIGN DATE: 7/10/24		
MATERIAL:				TOLERANCES ARE:				SHEET: 1 OF 2		DRAWN BY: JBR
APPROX. WEIGHT :		1527924 LBS		XX +/- 1/4				DRAWING DESCRIPTION: H-FRAME FOR 15'6" POLE SPACING AND 32' PY XARM		ENGINEER:
VOLUME:		IN3		X/XX +/- 1/32		PRODUCT LINE:		APPROVED:		
				ANGLES +/- 1°				SCALE: 1:200		



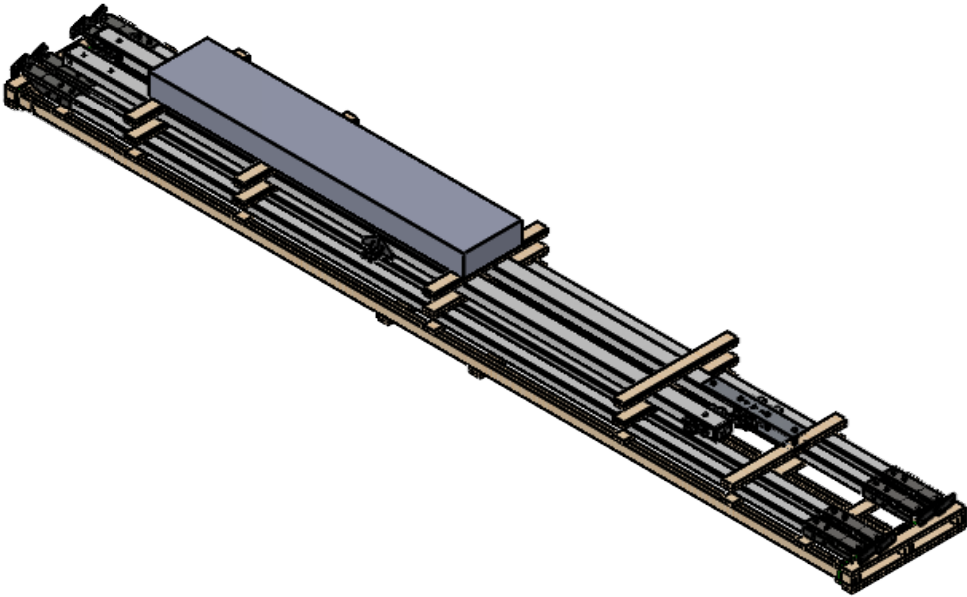
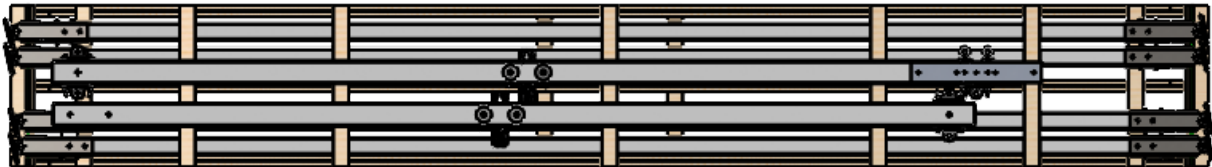
PAPER SIZE	DRAWING NUMBER
B	3016-009

- NOTES:
1. EACH LAYER TO BE BANDED
  2. PALLET LENGTH DEPENDANT ON LONGEST CROSSARM
  3. SPACER BLOCKS TO BE ADDED FOR STACKING PALLETS

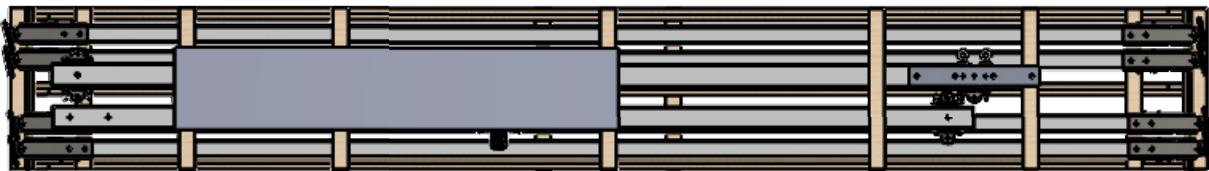
LAYER 1: XBRACES (PALLETIZED FOR 2 XBRACES)




LAYER 2: H-FRAME CROSSARMS



LAYER 3: GUY STRAIN, EQUIPMET, AND HARDWARE



THIS DRAWING CONTAINS CONFIDENTIAL INFORMATION THAT IS THE PROPERTY OF MACLEAN POWER, L.L.C. ("MACLEAN"). USE OF MACLEAN'S CONFIDENTIAL INFORMATION WITHOUT MACLEAN'S EXPRESS WRITTEN CONSENT IS STRICTLY PROHIBITED AND MAY EXPOSE YOU TO LEGAL LIABILITY. IF YOU BELIEVE THAT YOU RECEIVED THIS MATERIAL IN ERROR, PLEASE DESTROY IT OR RETURN IT TO "MACLEAN POWER, L.L.C., 101 PARK AVE., NEWBERRY, SOUTH CAROLINA 29108, "USA."

CATALOG NUMBER: HFKIT009		CUSTOMER NUMBER: H1T1		PART NUMBER: F490990		DRAWING NUMBER: 3016-009		DO NOT SCALE DRAWING	
PHYSICAL PROPERTIES				UNLESS OTHERWISE SPECIFIED DIMENSIONS ARE IN:  INCHES		<div> 101 PARK AVE. NEWBERRY, SC. 29108 TEL. (803) 628-7700      FAX: (803) 628-2139</div>		CAD GENERATED DRAWING DO NOT MANUALLY UPDATE	
								DESIGN DATE: 7/10/24	
				DRAWING DESCRIPTION: H-FRAME FOR 15'6" POLE SPACING AND 32' PY XARM				DRAWN BY: JBR	
				PRODUCT LINE:				ENGINEER:	
MATERIAL:		TOLERANCES ARE:				APPROVED:		SCALE: 1:100	
APPROX. WEIGHT : 1527924 LBS		XX +/- 1/4							
VOLUME: IN3		X/XX +/- 1/32							
		ANGLES +/- 1°							