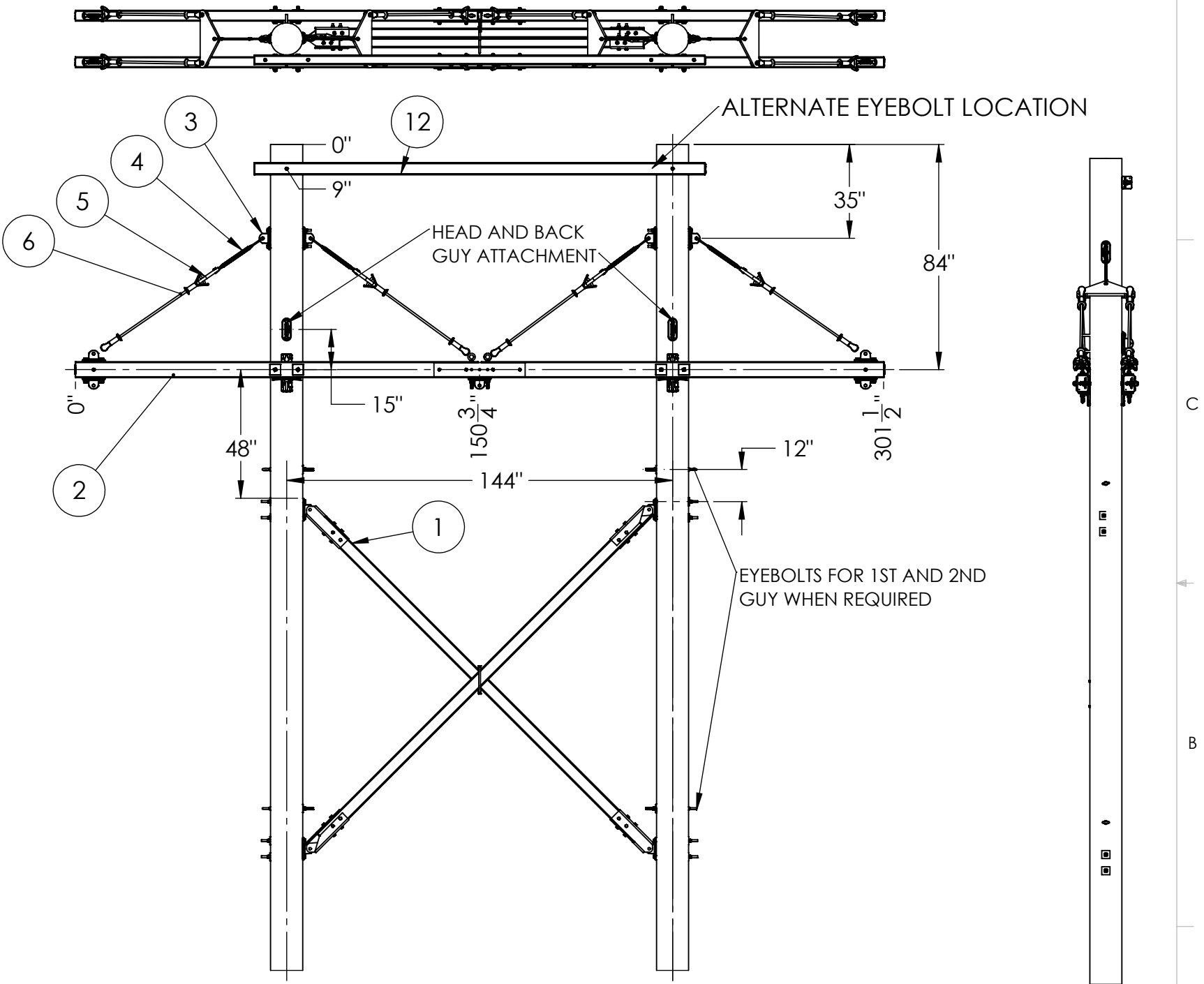



ITEM NO.	PART NUMBER	DESCRIPTION	QTY.
1	XB40K12	PW XBRACE FOR 12' POLE SPACING	1
2	PY25ST995-HF	25' PY TANGENT CROSSARM	2
3	F490923	DEADEND TEE, CAST IRON	6
4	F334745	CLEVIS CLEVIS TURNBUCKLE	4
5	F341237	YOKE PLATE	4
6	GYCYC30-36	Y-CLEVIS CLEVIS GUYSTRAIN, 30 IN LG	8
7	P72088	SHOULDER EYE BOLT	4
8	F614478	CURVED WASHER	12
9	J8899	BOLT-MACHINE-3/4 X16	16
10	F614577	NUT-SQ-3/4 (P42223)	16
11	F614686	NUT-LOCK-3/4	16
12	PW14UT1015-I	14' PW H-FRAME BRACE	1

NOTES

- POLES NOT INCLUDED
- X BRACE DETAILS ON DWG 3017-012
- 25' PY TANGENT DETAIL ON DWG 3006-532
- 14' PW H-FRAME BRACE DRAWING: 3003-385



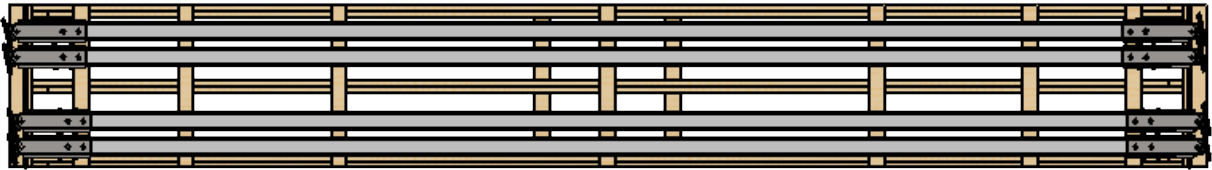
THIS DRAWING CONTAINS CONFIDENTIAL INFORMATION THAT IS THE PROPERTY OF MACLEAN POWER, L.L.C. ("MACLEAN"). USE OF MACLEAN'S CONFIDENTIAL INFORMATION WITHOUT MACLEAN'S EXPRESS WRITTEN CONSENT IS STRICTLY PROHIBITED AND MAY EXPOSE YOU TO LEGAL LIABILITY. IF YOU BELIEVE THAT YOU RECEIVED THIS MATERIAL IN ERROR, PLEASE DESTROY IT OR RETURN IT TO "MACLEAN POWER, L.L.C., 101 PARK AVE., NEWBERRY, SOUTH CAROLINA 29108, "USA."

CATALOG NUMBER:	HFKIT008	CUSTOMER NUMBER:	H1UB	PART NUMBER:		DRAWING NUMBER:	3016-008	DO NOT SCALE DRAWING
PHYSICAL PROPERTIES		UNLESS OTHERWISE SPECIFIED DIMENSIONS ARE IN: INCHES		 101 PARK AVE. NEWBERRY, SC. 29108 TEL. (803) 628-7700 FAX: (803) 628-2139		SHEET:	1 OF 2	CAD GENERATED DRAWING DO NOT MANUALLY UPDATE
						DRAWING DESCRIPTION: H-FRAME FOR 12' POLE SPACING AND 24' PY XARM		DESIGN DATE: 7/9/24
MATERIAL:		TOLERANCES ARE:	XX +/- 1/4					DRAWN BY: JBR
APPROX. WEIGHT :	1455074 LBS	X/XX +/- 1/32						ENGINEER:
VOLUME:	IN3	ANGLES +/- 1°				PRODUCT LINE:		APPROVED:
						SCALE:		1:200

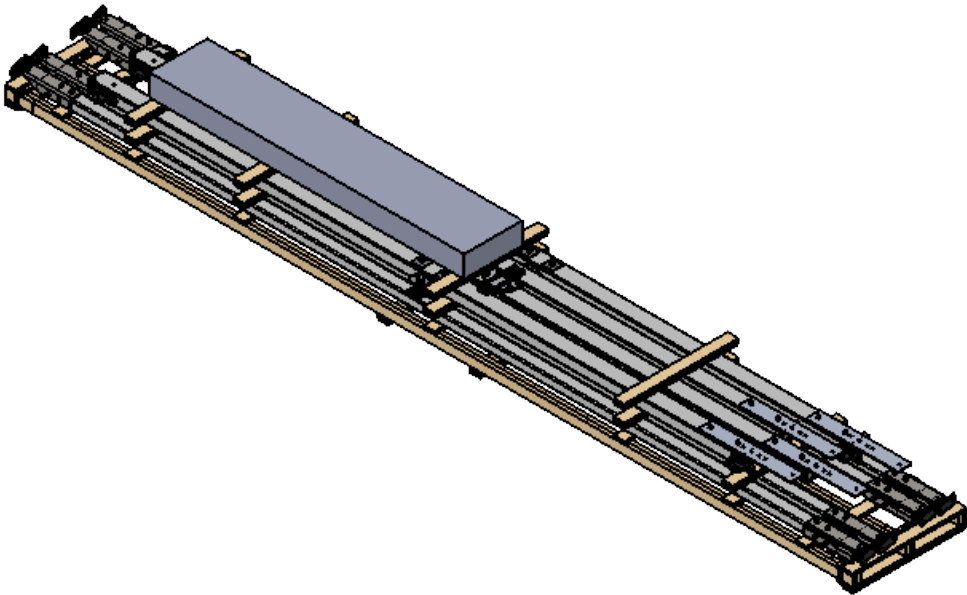
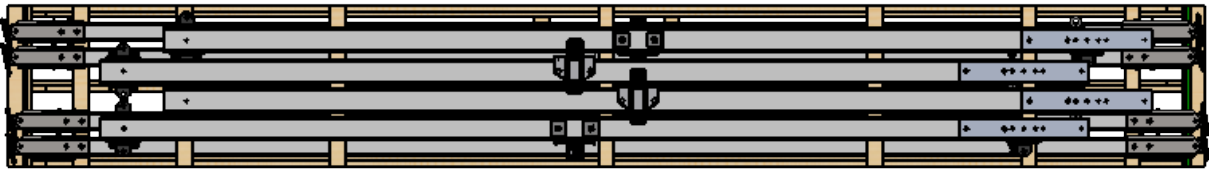
H-FRAME PALLET

- NOTES:
- 1. EACH LAYER TO BE BANDED
 - 2. PALLET LENGTH DEPENDANT ON LONGEST CROSSARM
 - 3. SPACER BLOCKS TO BE ADDED FOR STACKING PALLETS

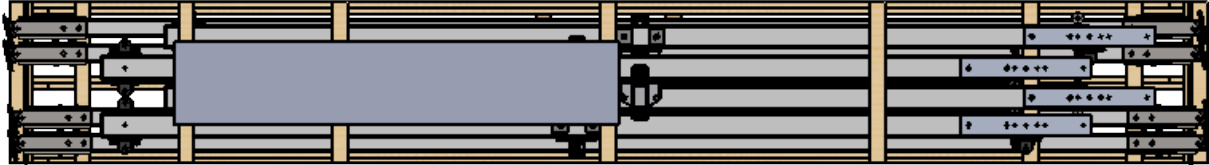
LAYER 1: XBRACES (PALLETIZED FOR 2 XBRACES)




LAYER 2: H-FRAME CROSSARMS




LAYER 3: GUY STRAIN, EQUIPMET, AND HARDWARE



THIS DRAWING CONTAINS CONFIDENTIAL INFORMATION THAT IS THE PROPERTY OF MACLEAN POWER, L.L.C. ("MACLEAN"). USE OF MACLEAN'S CONFIDENTIAL INFORMATION WITHOUT MACLEAN'S EXPRESS WRITTEN CONSENT IS STRICTLY PROHIBITED AND MAY EXPOSE YOU TO LEGAL LIABILITY. IF YOU BELIEVE THAT YOU RECEIVED THIS MATERIAL IN ERROR, PLEASE DESTROY IT OR RETURN IT TO "MACLEAN POWER, L.L.C., 101 PARK AVE., NEWBERRY, SOUTH CAROLINA 29108, "USA."

CATALOG NUMBER: HFKIT008		CUSTOMER NUMBER: H1UB		PART NUMBER:		DRAWING NUMBER: 3016-008		DO NOT SCALE DRAWING	
PHYSICAL PROPERTIES				UNLESS OTHERWISE SPECIFIED DIMENSIONS ARE IN:		 101 PARK AVE. NEWBERRY, SC. 29108 TEL. (803) 628-7700 FAX: (803) 628-2139		CAD GENERATED DRAWING DO NOT MANUALLY UPDATE	
				INCHES				DESIGN DATE: 7/9/24	
				TOLERANCES ARE:				DRAWN BY: JBR	
				XX +/- 1/4				ENGINEER:	
				X/XX +/- 1/32				APPROVED:	
MATERIAL:		APPROX. WEIGHT : 1455074 LBS		ANGLES +/- 1°		PRODUCT LINE:		SCALE: 1:100	
VOLUME: IN3									



101 PARK AVE.
NEWBERRY, SC. 29108
TEL. (803) 628-7700 FAX: (803) 628-2139